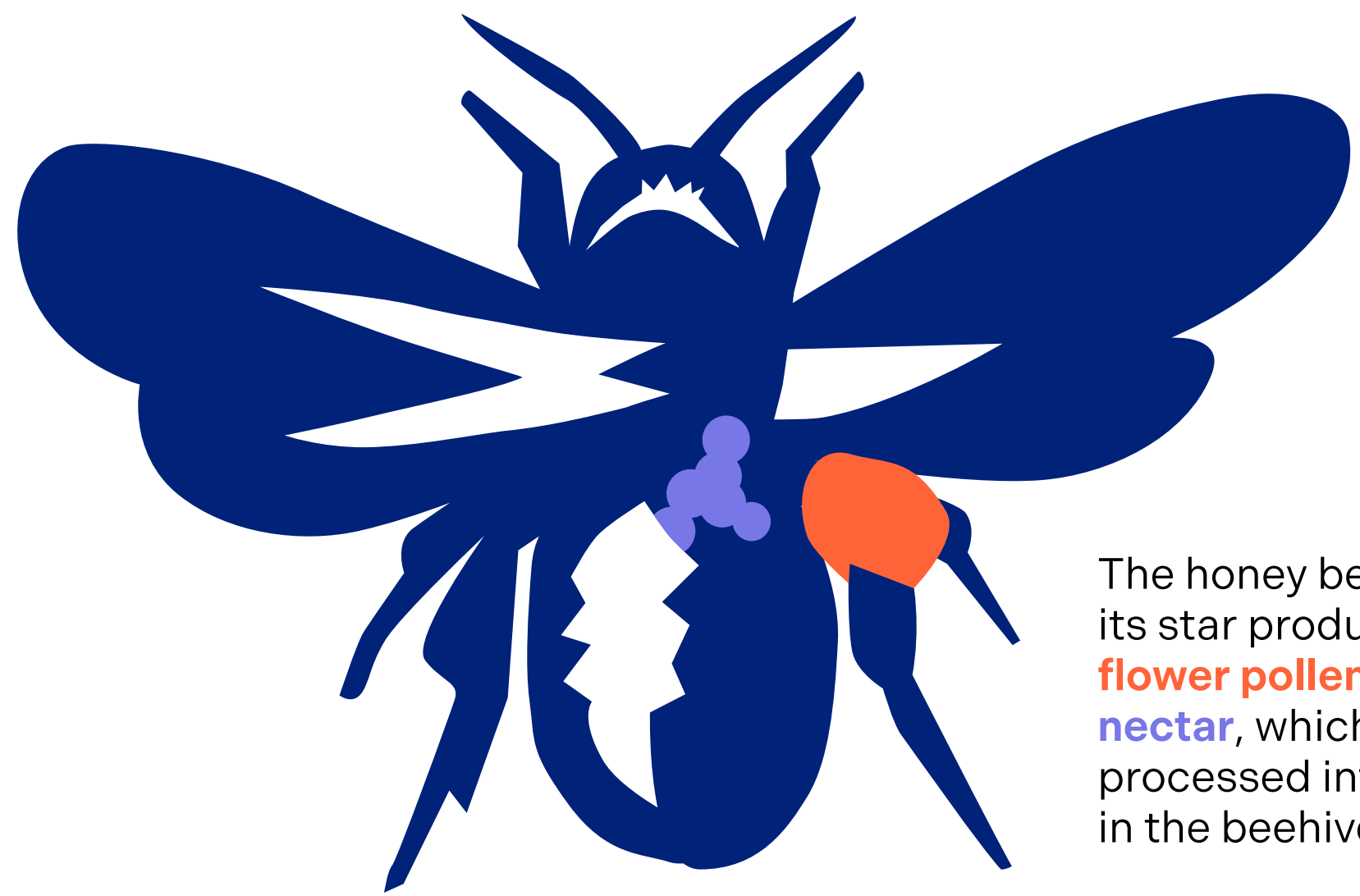


# apis mellifera - the honey bee

# some facts about bees

collected and provided by **honeywork design studio**  
www.honeywork.de



The honey bee collects its star products **flower pollen** and **nectar**, which is processed into honey in the beehive.

It takes **10 million visits to flowers** to produce



**500 grams** of honey.

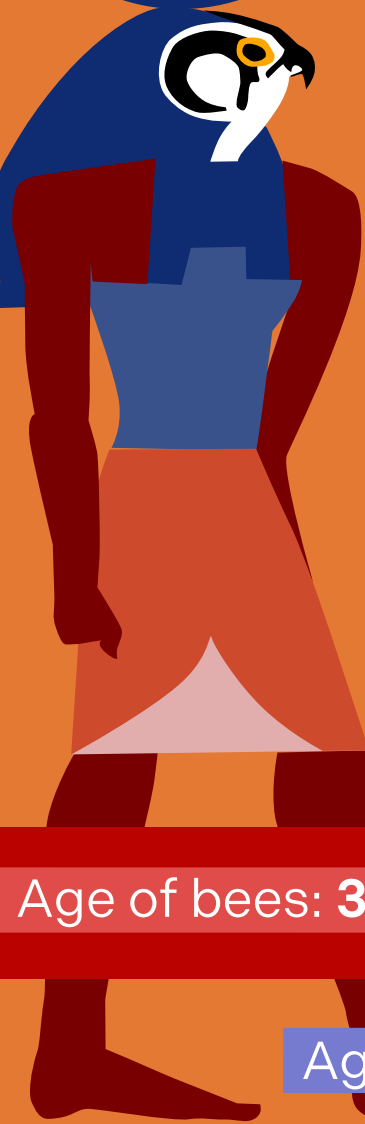
## history

### mythology

In ancient Egypt the honey bees were believed to rise from the tears of the sun god 'Ra'.

### timeline

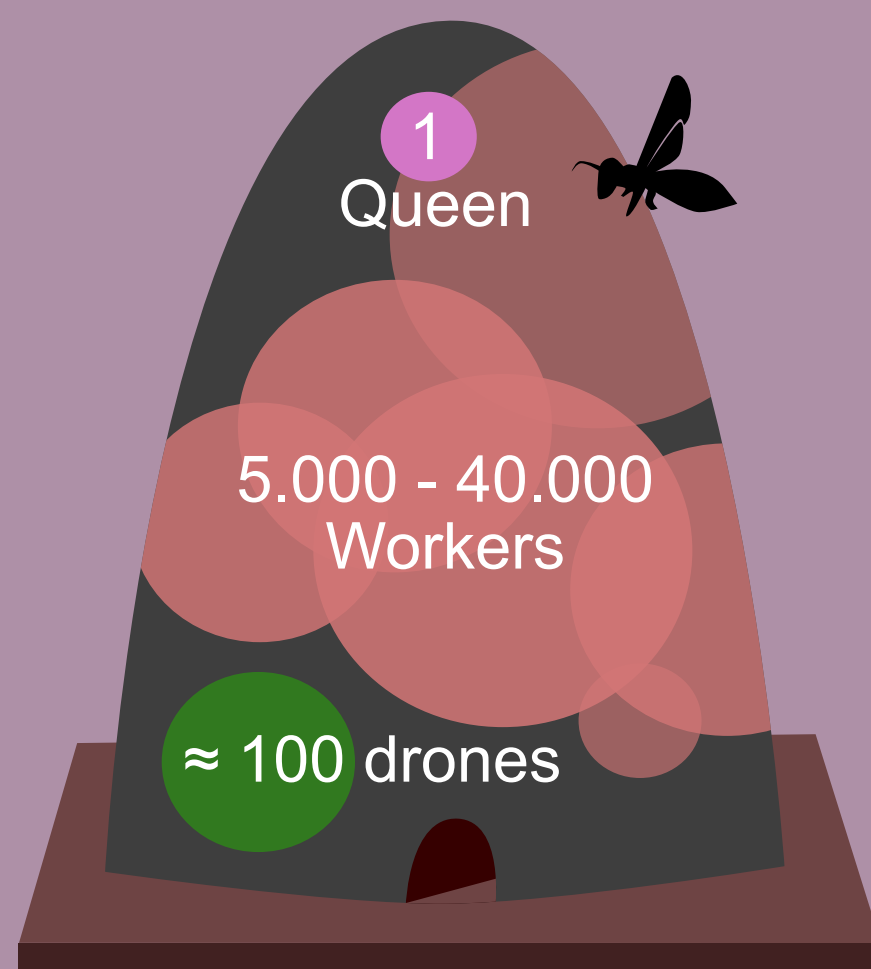
Cooperation of bees with humanity: **7.000 years** starting with the age of agriculture.



Age of bees: **30 million years**

Age of human race: **5 million years**

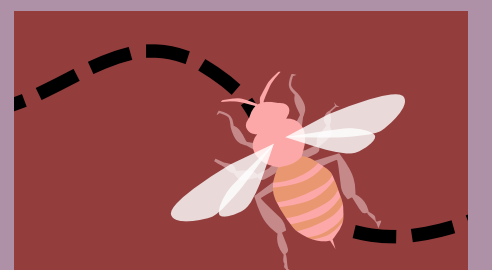
## organizing a beehive



Although the bee colony has a queen, it is not structured hierarchically.

The strategy of the hive arises from genetic information and environmental influences.

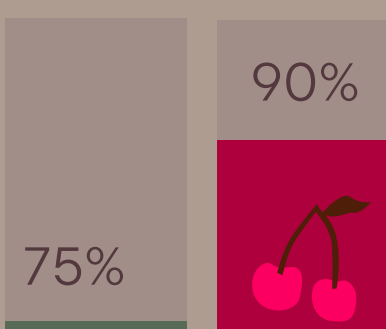
Communication occurs via chemical information (ferromones) and visual communication (bee dance).



## facts and stats

Dependence on pollination by bees or similar creatures.

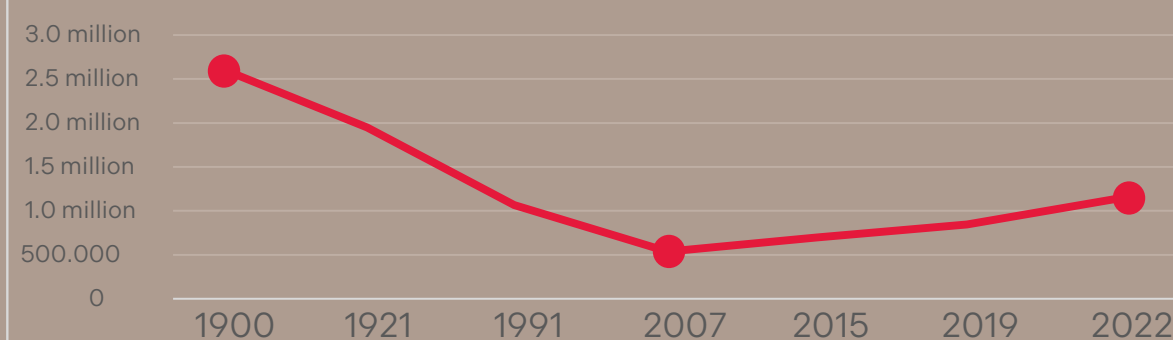
wild plants 75%



crops 90%



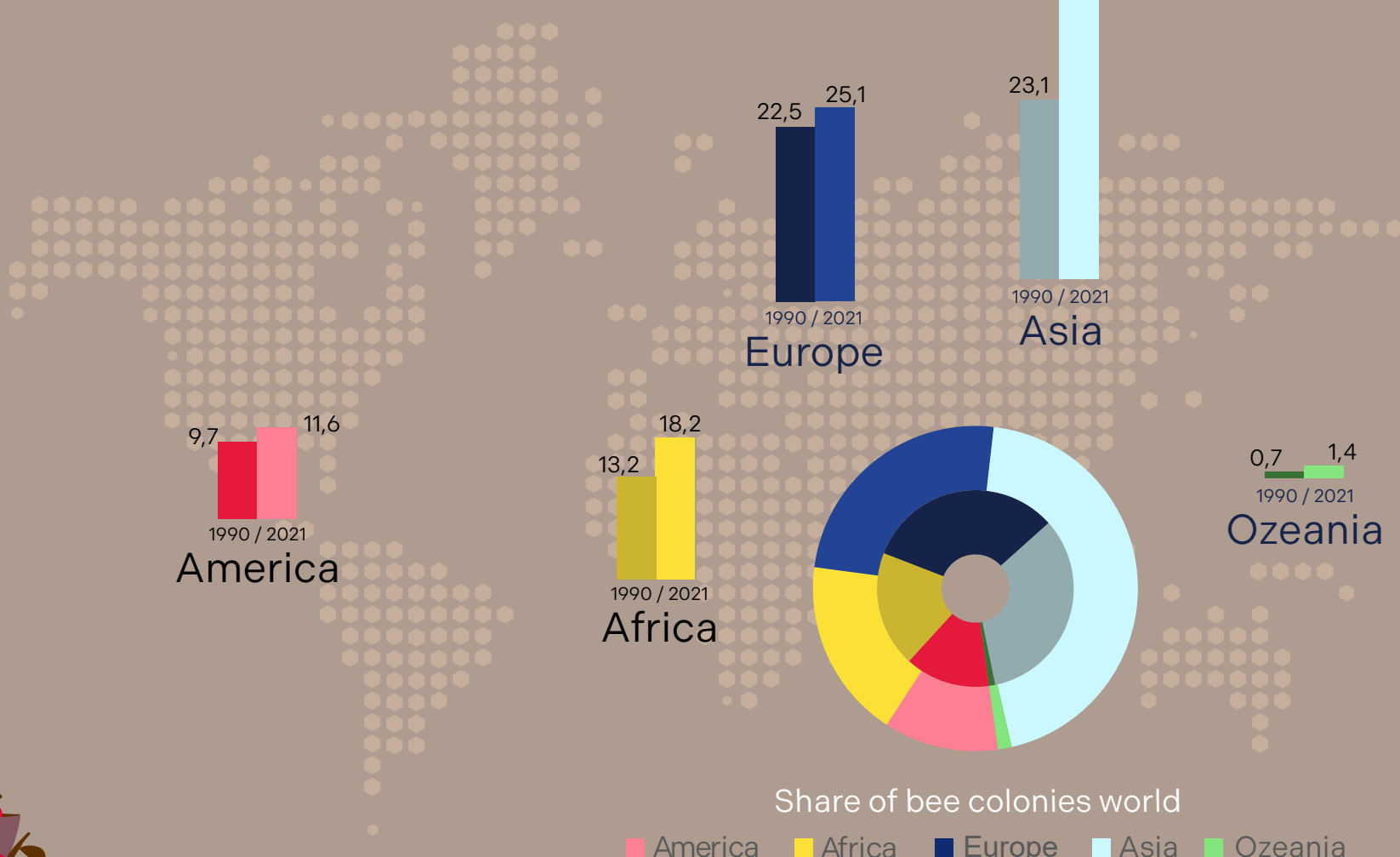
### Bee colonies in Germany



The number of bee colonies in Germany fell drastically between 1900 and the turn of the millennium. After 2007, there was a renewed increase.

### Worldwide development 1990 - 2022

Numbers in millions

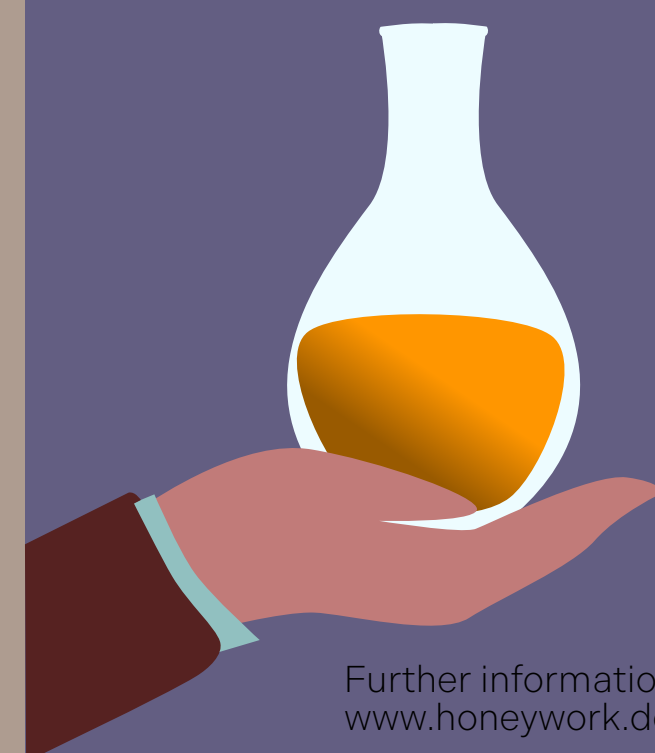


Share of bee colonies world

America Africa Europe Asia Ozeania

## value

- Bees make a significant contribution to feeding the world's population.
- Bees are essential to the global ecosystem.
- Bees provide valuable raw materials for human industry.



Further information and sources for the data:  
www.honeywork.de / made by **Sabine Mai** 2024